

Hemoglobin alpha chain Recombinant antibody

Cat:B32173R
Company: Haokebio

Uniprot ID:P69905

Applications: IHC:1:100-1:200

Organism:Rabbit

IHC-Polymer:1:400-1:800

Species reactivity:Human

TSA:1:500-1:1000

Background:

Hemoglobin is a specialized protein in red blood cells that transports oxygen. It consists of globin and heme, with the globin portion being a tetramer composed of two pairs of different globin chains (alpha chains and beta chains). Hemoglobin alpha chains are involved in the transport of oxygen from the lungs to various peripheral tissues. Hemoglobin alpha is expressed in the spleen, bone marrow, placenta, kidneys, and brain. When the level of hemoglobin alpha chains in the human body is low, it usually indicates a disease called alpha-thalassemia.

Protein full name:

hemoglobin, alpha 1

Synonyms:

HBA1, Hemoglobin a, HBA2, Alpha-globin, Alpha globin

Immunogen:

Peptide

Isotype:

IgG

Subcellular location:

Cytoplasm

Purity:

Affinity purification

Form:

Liquid

Storage Buffer:

PBS with 0.02% sodium azide, 100 µg/ml BSA and 50% glycerol.

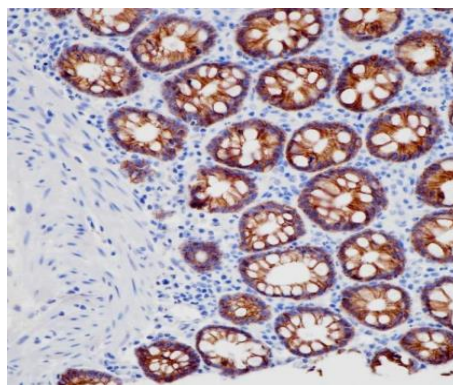
Storage:

Store at -20 °C for one year.

Experimental procedure:

Antigen retrieval: Citrate buffer (pH 9.0) , Medium high heat for 8 minutes, stop for 7 minutes, medium high heat for 8 minutes. Incubate antibody, 4°C overnight. Secondary antibody: Poly-HRP Goat Anti-Rabbit & Mouse Universal Secondary Antibody, RT, 1h.

Images:



Sample: Human esophagus tissue, 4% PFA 12-24h

Source of Reagents:

发表[中文论文]请标注:Hemoglobin alpha chain(B32173R) 由杭州浩克生物技术有限公司提供;

发表[英文论文]请标注:Hemoglobin alpha chain(B32173R) were kindly provided by Hangzhou Haoke Biotechnology Co., Ltd.