

CLIC1 Recombinant antibody

Cat:B36134S

Company: HaoKebio

Uniprot ID:O00299

Applications: IHC:1:500-1:2000

Organism:Rabbit

IHC-Polymer:1:2000-1:8000

Species reactivity:Human Mouse Rat

IHC-TSA:1:2500-1:10000

Molecular Weight Calculation: 27 kDa

IF:1:50-1:100

Observed Molecular Weight: 27-32 kDa

WB:1:5000-1:50000

Background:

Chloride intracellular channel protein 1 (CLIC1) is a member of the chloride intracellular channel protein family. It plays a crucial role in various cellular processes, including the regulation of chloride ion transport, cell viability, and mitochondrial function. CLIC1 is involved in the formation of membrane-inserted channels that facilitate chloride ion movement, which is essential for maintaining cellular homeostasis and function. Additionally, CLIC1 has been implicated in cancer progression, where it influences cell proliferation, migration, and invasion.

Synonyms:

G6, NCC27

Immunogen:

Recombinant protein

Isotype:

IgG

Subcellular location:

Cytoplasm

Purity:

Affinity purification

Form:

Liquid

Storage Buffer:

PBS with 0.02% sodium azide, 100 µg/ml BSA and 50% glycerol.

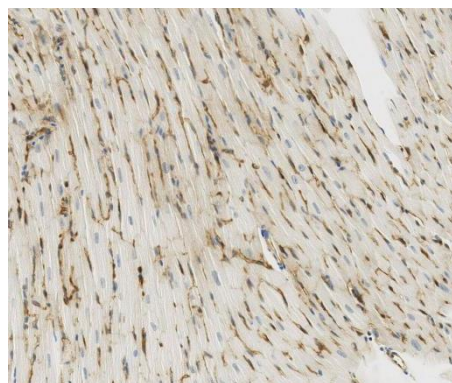
Storage:

Store at -20 °C for one year.

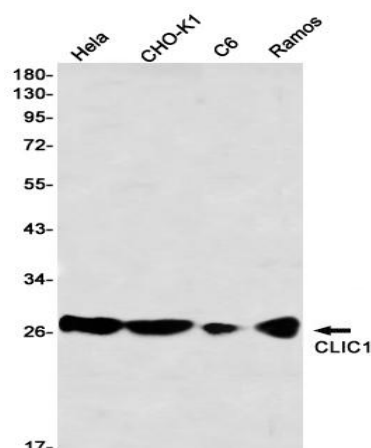
Experimental procedure:

Antigen retrieval: Citrate buffer (pH 9.0) , Medium high heat for 8 minutes, stop for 7 minutes, medium high heat for 8 minutes. Incubate antibody, 4°C overnight. Secondary antibody: Poly-HRP Goat Anti-Rabbit & Mouse Universal Secondary Antibody, RT, 1h.

Images:



Sample: Mouse muscle, 4% PFA 12-24h



Dilution of 1:50000 incubated at room temperature for 1.5 hours.

Source of Reagents:

发表[中文论文]请标注:CLIC1(B36134S)由杭州浩克生物技术有限公司提供;

发表[英文论文]请标注:CLIC1(B36134S) were k
indly provided by Hangzhou Haoke Biotechnolo
gy Co., Ltd.