

FLI1 Recombinant antibody

Cat:B36155S

Company: HaoKebio

Uniprot ID:Q01543

Applications: IHC:1:500-1:2000

Organism:Rabbit

IHC-Polymer:1:2000-1:8000

Species reactivity:Human Mouse

IHC-TSA:1:2500-1:10000

Molecular Weight Calculation: 452 aa, 51 kDa

IF:1:50-1:100

Observed Molecular Weight: 51 kDa

WB:1:5000-1:50000

Background:

Friend leukemia virus integration1 (FLI1) that is also termed EWSR2 encodes a sequence-specific transcriptional activator involved in Ewing's sarcoma (EWS), a malignant small, round, blue cell tumour. It is a rare disease in which cancer cells are found in the bone or in soft tissue. The most common areas in which it occurs are the pelvis, the femur, the humerus, the ribs and clavicle. EWS occurs most frequently in teenagers and young adults. FLI1 protein may act as an aberrant transcription factor, but exact mechanisms of oncogenesis remains unknown.

Synonyms:

FLI 1, FLI-1, Friend leukemia virus integration 1, Proto-oncogene Fli-1

Immunogen:

Recombinant protein

Isotype:

IgG

Subcellular location:

Nucleus

Purity:

Affinity purification

Form:

Liquid

Storage Buffer:

PBS with 0.02% sodium azide, 100 µg/ml BSA and 50% glycerol.

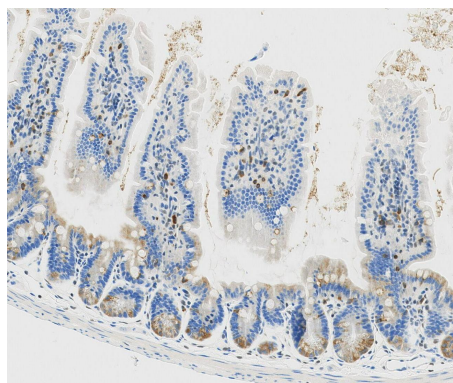
Storage:

Store at -20 °C for one year.

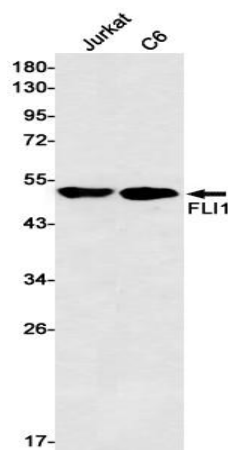
Experimental procedure:

Antigen retrieval: Citrate buffer (pH 9.0) , Medium high heat for 8 minutes, stop for 7 minutes, medium high heat for 8 minutes. Incubate antibody, 4°C overnight. Secondary antibody: Poly-HRP Goat Anti-Rabbit & Mouse Universal Secondary Antibody, RT, 1h.

Images:



Sample: Mouse intestine, 4% PFA 12-24h



Dilution of 1:50000 incubated at room temperature for 1.5 hours.

Source of Reagents:

发表[中文论文]请标注:FLI1(B36155S)由杭州浩克生物技术有限公司提供;

发表[英文论文]请标注:FLI1(B36155S) were kindly provided by Hangzhou Haoke Biotechnology Co., Ltd.