

## MCM3 Recombinant antibody

**Cat:** B36169S

**Company:** HaoKebio

**Uniprot ID:** P25205

**Applications:** IHC:1:300-1:1200

**Organism:** Rabbit

IHC-Polymer:1:1200-1:4800

**Species reactivity:** Human Mouse Rat

IHC-TSA:1:1500-1:6000

**Molecular Weight Calculation:** 91 kDa

IF:1:50

**Observed Molecular Weight:** 102-105 kDa

WB:1:5000-1:50000

FC:1:200-1:600

### Background:

MCM3, also named as HCC5, P1-MCM3, p102, RLF subunit beta and RLFB, belongs to the MCM family. MCM3 is essential for the initiation of DNA replication and is involved in ensuring that DNA replication is initiated precisely once per cell cycle. The overexpression of MCM3 is related to proliferation of tumor cells.

### Synonyms:

242103B9, DNA polymerase alpha holoenzyme-associated protein P1, EC:3.6.4.12, P1 MCM3, p102

### Immunogen:

Recombinant protein

### Isotype:

IgG

### Subcellular location:

Nucleus

### Purity:

Affinity purification

### Form:

Liquid

### Storage Buffer:

PBS with 0.02% sodium azide, 100 µg/ml BSA and 50% glycerol.

### Storage:

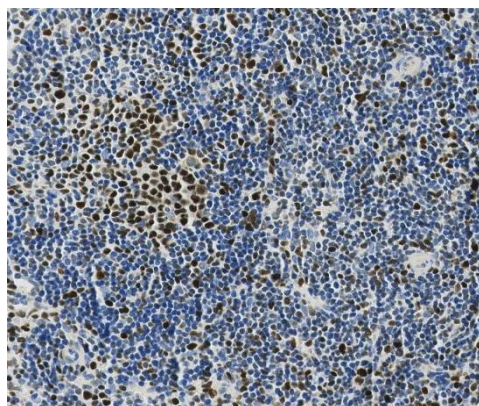
Store at -20 °C for one year.

### Experimental procedure:

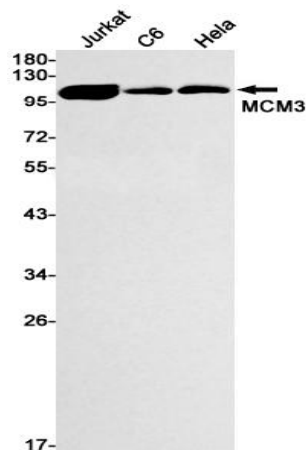
Antigen retrieval: Citrate buffer (pH 9.0), Medium high heat for 8 minutes, stop for 7 minutes, medium high heat for 8 minutes. Incubate antibody,

4°C overnight. Secondary antibody: Poly-HRP Goat Anti-Rabbit & Mouse Universal Secondary Antibody, RT, 1h.

### Images:



Sample: Mouse spleen, 4% PFA 12-24h



Dilution of 1:50000 incubated at room temperature for 1.5 hours.

### Source of Reagents:

发表[中文论文]请标注:MCM3(B36169S)由杭州浩克生物技术有限公司提供;

发表[英文论文]请标注:MCM3(B36169S) were kindly provided by Hangzhou Haoke Biotechnology Co., Ltd.

