

Bcl2 Recombinant antibody

Cat: B36217S

Company: HaoKebio

Uniprot ID: P10417

Applications: IHC:1:1000-1:4000

Organism: Rabbit

IHC-Polymer:1:4000-1:16000

Species reactivity: Human Mouse

IHC-TSA:1:5000-1:20000

Molecular Weight Calculation: 26 kDa

IF:1:50-1:200

Observed Molecular Weight: 26 kDa

WB:1:2000-1:10000

FC:1:200-1:600

Background:

Bcl2 is a member of the B cell lymphoma 2 protein family. Members of this family regulate cell death in multiple cell types and can have either proapoptotic or antiapoptotic activities. The protein encoded by this gene inhibits mitochondrial-mediated apoptosis. This protein is an integral outer mitochondrial membrane protein that functions as a part of signaling pathway that controls mitochondrial permeability in response to apoptotic stimuli. This protein may also play a role in neuron cell survival and autophagy. Abnormal expression and chromosomal translocations of this gene are associated with cancer progression in numerous tissues.

Synonyms:

Bcl-2, 240571H5, B cell leukemia/lymphoma 2, Bcl 2

Immunogen:

Recombinant protein

Isotype:

IgG

Subcellular location:

Cytoplasm

Purity:

Affinity purification

Form:

Liquid

Storage Buffer:

PBS with 0.02% sodium azide, 100 µg/ml BSA and 50% glycerol.

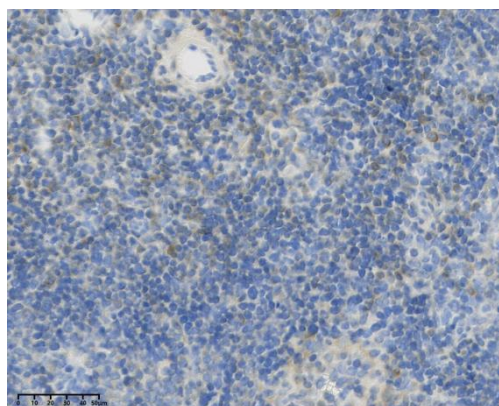
Storage:

Store at -20 °C for one year.

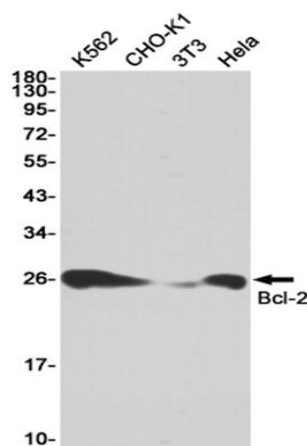
Experimental procedure:

Antigen retrieval: Citrate buffer (pH 9.0), Medium high heat for 8 minutes, stop for 7 minutes, medium high heat for 8 minutes. Incubate antibody, 4°C overnight. Secondary antibody: Poly-HRP Goat Anti-Rabbit & Mouse Universal Secondary Antibody, RT, 1h.

Images:



Sample: Mouse spleen, 4% PFA 12-24h



Dilution of 1:10000 incubated at room temperature for 1.5 hours.

Source of Reagents:

发表[中文论文]请标注:Bcl2(B36217S)由杭州
浩克生物技术有限公司提供;

发表[英文论文]请标注:Bcl2(B36217S) were kin
dly provided by Hangzhou Haoke Biotechnolog
y Co., Ltd.