

Lumican Recombinant antibody

Cat:B33837D

Company: HaoKebio

Uniprot ID:P51884

Applications: IHC:1:50-1:100

Organism:Rabbit

IHC-Polymer:1:200-1:400

Species reactivity:Human Mouse Rat

IHC-TSA:1:250-1:500

Molecular Weight Calculation: 38 kDa

WB:1:1000-1:5000

Observed Molecular Weight: 60 kDa

FC:1:100-1:200

Background:

This gene encodes a member of the small leucine-rich proteoglycan (SLRP) family that includes decorin, biglycan, fibromodulin, keratocan, epiphysean, and osteoglycin. In these bifunctional molecules, the protein moiety binds collagen fibrils and the highly charged hydrophilic glycosaminoglycans regulate interfibrillar spacings. Lumican is the major keratan sulfate proteoglycan of the cornea but is also distributed in interstitial collagenous matrices throughout the body. Lumican may regulate collagen fibril organization and circumferential growth, corneal transparency, and epithelial cell migration and tissue repair.

Synonyms:

LDC; SLRR2D

Immunogen:

Recombinant protein

Isotype:

IgG

Subcellular location:

Secrete

Purity:

Affinity purification

Form:

Liquid

Storage Buffer:

PBS with 0.02% sodium azide, 100 µg/ml BSA and 50% glycerol.

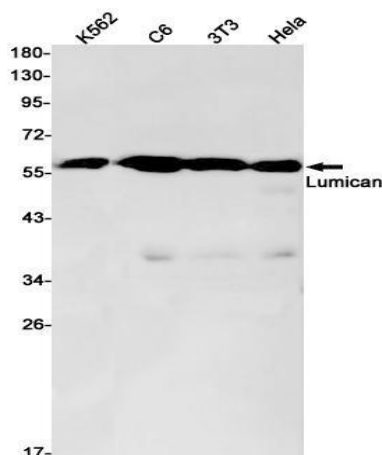
Storage:

Store at -20 °C for one year.

Experimental procedure:

Antigen retrieval: Citrate buffer (pH 9.0) , Medium high heat for 8 minutes, stop for 7 minutes, medium high heat for 8 minutes. Incubate antibody, 4 °C overnight. Secondary antibody: Poly-HRP Goat Anti-Rabbit & Mouse Universal Secondary Antibody, RT, 1h.

Images:



Dilution of 1:2500 incubated at room temperature for 1.5 hours.

Source of Reagents:

发表[中文论文]请标注:Lumican(B33837D)由杭州浩克生物技术有限公司提供;

发表[英文论文]请标注:Lumican(B33837D) were kindly provided by Hangzhou Haoke Biotechnology Co., Ltd.