

## ALDH1A1 Recombinant antibody

**Cat:**B36425S

**Company:** HaoKebio

**Uniprot ID:**P00352

**Applications:** IHC:1:50-1:500

**Organism:**Rabbit

IHC-Polymer:1:200-1:2000

**Species reactivity:**Human Mouse

IHC-TSA:1:250-1:2500

**Molecular Weight Calculation:** 501 aa, 55 kDa

WB:1:5000-1:50000

**Observed Molecular Weight:** 50-55 kDa

### Background:

ALDH1A1(Aldehyde dehydrogenase family 1 member A1), also named as ALDC, ALDH1 and PUMB1, belongs to the aldehyde dehydrogenase family. The ALDH1A1 gene encodes a liver cytosolic isoform of acetaldehyde dehydrogenase, an enzyme involved in the major pathway of alcohol metabolism after alcohol dehydrogenase. ALDH1A1 plays a critical role in protection against oxidative stress-induced cytotoxicity in lens epithelial cells. And it is important for multiple biological activities including drug resistance, cell differentiation, and oxidative stress response. As a novel cancer stem cell marker, ALDH1A1 can be used for tumors whose corresponding normal tissues express ALDH1 in relatively restricted or limited levels such as breast, lung, ovarian or colon cancer.

### Synonyms:

ALDH1 A1, ALDH 1A1, Aldehyde dehydrogenase 1A1, ALDC, 3-deoxyglucosone dehydrogenase

### Immunogen:

Recombinant protein

### Isotype:

IgG

### Subcellular location:

Cytoplasm

### Purity:

Affinity purification

### Form:

Liquid

### Storage Buffer:

PBS with 0.02% sodium azide, 100 µg/ml BSA and 50% glycerol.

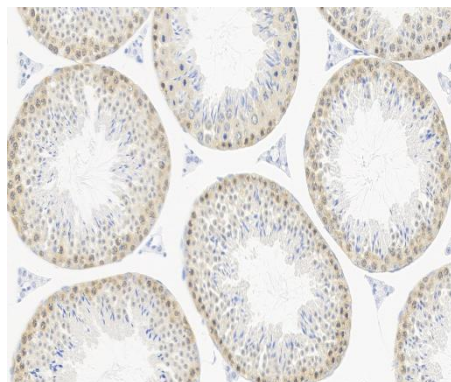
### Storage:

Store at -20 °C for one year.

### Experimental procedure:

Antigen retrieval: Citrate buffer (pH 9.0), Medium high heat for 8 minutes, stop for 7 minutes, medium high heat for 8 minutes. Incubate antibody, 4°C overnight. Secondary antibody: Poly-HRP Goat Anti-Rabbit & Mouse Universal Secondary Antibody, RT, 1h.

### Images:



Sample: Mouse testis, 4% PFA 12-24h

### Source of Reagents:

发表[中文论文]请标注:ALDH1A1(B36425S)由杭州浩克生物技术有限公司提供;

发表[英文论文]请标注:ALDH1A1(B36425S) were kindly provided by Hangzhou Haoke Biotechnology Co., Ltd.