

## AP2S1 Recombinant antibody

**Cat:**B36427S

**Company:** HaoKebio

**Uniprot ID:**P53680

**Applications:** IHC:1:400-1:1600

**Organism:**Rabbit

IHC-Polymer:1:1600-1:6400

**Species reactivity:**Human Mouse Rat

IHC-TSA:1:2000-1:8000

**Molecular Weight Calculation:** 142 aa, 17 kDa

IF:1:50-1:100

**Observed Molecular Weight:** 15-17 kDa

WB:1:1000-1:8000

### Background:

AP2S1 is a component of the adaptor protein complex 2 (AP-2). AP complexes are cytosolic heterotetramers that mediate the sorting of membrane proteins in the secretory and endocytic pathways.

AP complexes form clathrin-coated vesicles (CCVs) by recruiting the scaffold protein, clathrin. AP complexes also play a pivotal role in cargo selection by recognizing the sorting signals within the cytoplasmic tail of integral membrane proteins.

AP-2 is composed of two large adaptins (alpha-type subunit AP2A1 or AP2A2 and beta-type subunit AP2B1), a medium adaptin (mu-type subunit AP2M1), and a small adaptin (sigma-type subunit AP2S1). It works on the plasma membrane to internalize cargo in clathrin-mediated endocytosis.

Missense mutations of AP2S1 affect Arg15 and lead to familial hypocalciuric hypercalcemia type 3 (FHH3), an extracellular calcium homeostasis disorder affecting the parathyroids, kidneys, and bone.

### Synonyms:

241369F1, Adaptor protein complex AP-2 subunit sigma, Adaptor-related protein complex 2 subunit sigma, AP 2 complex subunit sigma, AP17

### Immunogen:

Recombinant protein

### Isotype:

IgG

### Subcellular location:

Cytoplasm,Membrane

### Purity:

Affinity purification

### Form:

Liquid

### Storage Buffer:

PBS with 0.02% sodium azide, 100 µg/ml BSA and 50% glycerol.

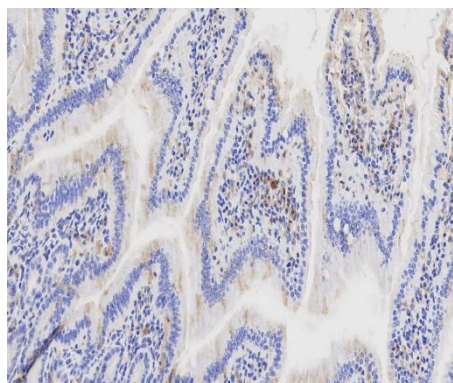
### Storage:

Store at -20 °C for one year.

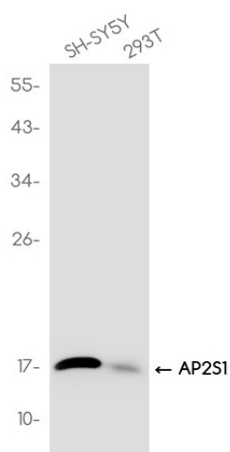
### Experimental procedure:

Antigen retrieval: Citrate buffer (pH 9.0), Medium high heat for 8 minutes, stop for 7 minutes, medium high heat for 8 minutes. Incubate antibody, 4°C overnight. Secondary antibody: Poly-HRP Goat Anti-Rabbit & Mouse Universal Secondary Antibody, RT, 1h.

### Images:



Sample: Mouse intestine, 4% PFA 12-24h



Dilution of 1:4000 incubated at room temperature for 1.5 hours.

#### Source of Reagents:

发表[中文论文]请标注:AP2S1(B36427S)由杭州浩克生物技术有限公司提供;

发表[英文论文]请标注:AP2S1(B36427S) were kindly provided by Hangzhou Haoke Biotechnology Co., Ltd.