

## CLEC14A Recombinant antibody

**Cat:** B36446S

**Company:** HaoKebio

**Uniprot ID:** Q86T13

**Applications:** IHC:1:200-1:800

**Organism:** Rabbit

IHC-Polymer:1:800-1:3200

**Species reactivity:** Human Mouse Rat

IHC-TSA:1:1000-1:4000

**Molecular Weight Calculation:** 490 aa, 52 kDa

IF:1:50-1:100

**Observed Molecular Weight:** 52, 100 kDa

WB:1:2000-1:10000

### Background:

CLEC14A is a single-pass type I transmembrane protein whose extracellular domain consists of a C-type lectin-like domain (CTLD), a series of EGF-like domains, and a sushi-like domain. CLEC14A is a member of the C-type lectin domain superfamily that also includes endosialin, thrombospondin and CD93. It has been reported that CLEC14A is specifically expressed in endothelial cells and mediates cell to cell adhesion. CLEC14A may be involved in tumor angiogenesis.

### Synonyms:

241206D3, C14orf27, CEG1, C-type lectin domain family 14 member A, EGFR-5

### Immunogen:

Recombinant protein

### Isotype:

IgG

### Subcellular location:

Membrane

### Purity:

Affinity purification

### Form:

Liquid

### Storage Buffer:

PBS with 0.02% sodium azide, 100 µg/ml BSA and 50% glycerol.

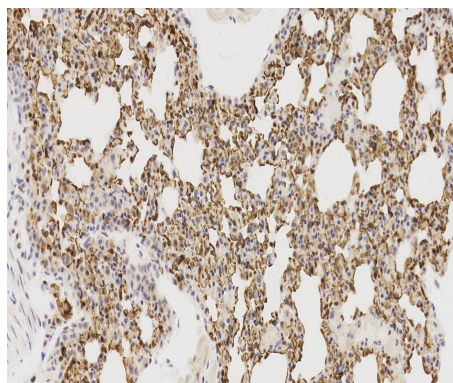
### Storage:

Store at -20 °C for one year.

### Experimental procedure:

Antigen retrieval: Citrate buffer (pH 9.0) , Medium high heat for 8 minutes, stop for 7 minutes, medium high heat for 8 minutes. Incubate antibody, 4°C overnight. Secondary antibody: Poly-HRP Goat Anti-Rabbit & Mouse Universal Secondary Antibody, RT, 1h.

### Images:



Sample: Mouse lung, 4% PFA 12-24h

### Source of Reagents:

发表[中文论文]请标注:CLEC14A(B36446S)由杭州浩克生物技术有限公司提供;

发表[英文论文]请标注:CLEC14A(B36446S) were kindly provided by Hangzhou Haoke Biotechnology Co., Ltd.