

## AGXT2L1 Recombinant antibody

**Cat:**B36451S

**Company:** HaoKebio

**Uniprot ID:**Q8TBG4

**Applications:** IHC:1:50-1:500

**Organism:**Rabbit

IHC-Polymer:1:200-1:2000

**Species reactivity:**Human Mouse

IHC-TSA:1:250-1:2500

**Molecular Weight Calculation:** 499 aa, 56 kDa

### Background:

Alanine-glyoxylate aminotransferase 2-like 1 (AGXT2L1), also called ethanolamine phosphate phosphohydrolase (ETNPPL), is a brain enzyme, so named after its similarity to AGXT2 (36% sequence identity), that may be involved in the pathogenesis of severe neuropsychiatric disturbances. AGXT2L1 is significantly down-regulated in cancerous tissues and may be a tumor suppressor.

### Synonyms:

ETNPPL, Ethanolamine-phosphate phosphohydrolase, EC:4.2.3.2, Alanine--glyoxylate aminotransferase 2-like 1, 241119H5

### Immunogen:

Recombinant protein

### Isotype:

IgG

### Subcellular location:

Cytoplasm

### Purity:

Affinity purification

### Form:

Liquid

### Storage Buffer:

PBS with 0.02% sodium azide, 100 µg/ml BSA and 50% glycerol.

### Storage:

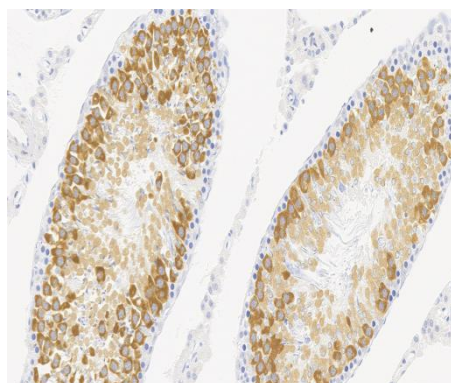
Store at -20 °C for one year.

### Experimental procedure:

Antigen retrieval: Citrate buffer (pH 9.0), Medium high heat for 8 minutes, stop for 7 minutes, medium high heat for 8 minutes. Incubate antibody,

4°C overnight. Secondary antibody: Poly-HRP Goat Anti-Rabbit & Mouse Universal Secondary Antibody, RT, 1h.

### Images:



Sample: Mouse testis, 4% PFA 12-24h

### Source of Reagents:

发表[中文论文]请标注:AGXT2L1(B36451S)由杭州浩克生物技术有限公司提供;

发表[英文论文]请标注:AGXT2L1(B36451S) were kindly provided by Hangzhou Haoke Biotechnology Co., Ltd.