

## ALCAM Recombinant antibody

**Cat:** B36453S

**Company:** HaoKebio

**Uniprot ID:** Q61490

**Applications:** IHC:1:250-1:1000

**Organism:** Rabbit

IHC-Polymer:1:1000-1:4000

**Species reactivity:** Mouse

IHC-TSA:1:1200-1:5000

**Molecular Weight Calculation:** 65 kDa

IF:1:50

**Observed Molecular Weight:** 90-100 kDa

WB:1:2000-1:10000

### Background:

Activated leukocyte cell adhesion molecule (ALCAM, also known as CD166) is a cell adhesion molecule that belongs to the immunoglobulin superfamily. It is involved in cell-cell adhesion through homophilic and heterophilic (to CD6) interactions. ALCAM is widely expressed in a variety of normal tissues. Altered ALCAM expression has been associated with the differentiation state and progression in some neoplasms including melanoma, prostate, colorectal, and breast cancers.

### Synonyms:

Protein DM-GRASP, CD166 antigen, CD166, BEN, Activated leukocyte cell adhesion molecule

### Immunogen:

Recombinant protein

### Isotype:

IgG

### Subcellular location:

Membrane

### Purity:

Affinity purification

### Form:

Liquid

### Storage Buffer:

PBS with 0.02% sodium azide, 100 µg/ml BSA and 50% glycerol.

### Storage:

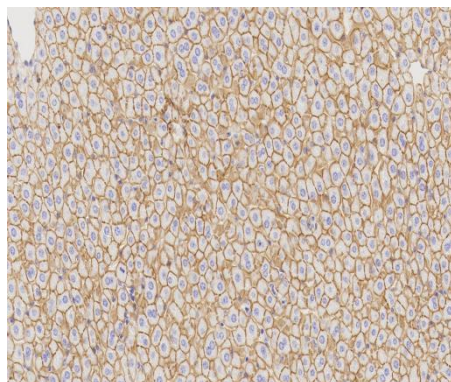
Store at -20 °C for one year.

### Experimental procedure:

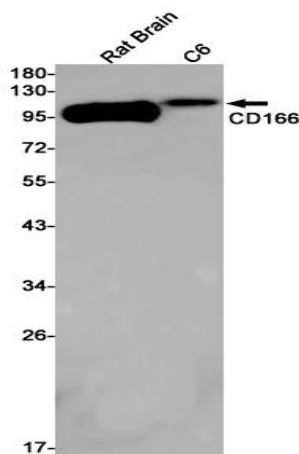
Antigen retrieval: Citrate buffer (pH 9.0), Medium high heat for 8 minutes, stop for 7 minutes, medium

high heat for 8 minutes. Incubate antibody, 4°C overnight. Secondary antibody: Poly-HRP Goat Anti-Rabbit & Mouse Universal Secondary Antibody, RT, 1h.

### Images:



Sample: Mouse liver, 4% PFA 12-24h



Dilution of 1:5000 incubated at room temperature for 1.5 hours.

### Source of Reagents:

发表[中文论文]请标注:ALCAM(B36453S)由杭州浩克生物技术有限公司提供;

发表[英文论文]请标注:ALCAM(B36453S) were kindly provided by Hangzhou Haoke Biotechnology Co., Ltd.

