

CD2AP Recombinant antibody

Cat:B36485S

Company: HaoKebio

Uniprot ID:Q9JLQ0

Applications: IHC:1:1000-1:4000

Organism:Rabbit

IHC-Polymer:1:4000-1:16000

Species reactivity:Human Mouse

IHC-TSA:1:5000-1:20000

Molecular Weight Calculation: 637 aa, 70 kDa

IF:1:50-1:200

Observed Molecular Weight: 74 kDa

WB:1:2000-1:10000

Background:

CD2 associated protein (CD2AP, also known as CMS) is a scaffolding molecule that acts as an adapter protein between membrane proteins and the actin cytoskeleton. CD2AP also plays a role in epithelial cell junction formation and affects the pathogenesis of Alzheimer's disease. Its mutations are associated with sporadic nephrotic syndrome and focal segmental glomerulosclerosis (FSGS).

Synonyms:

CD2 associated protein, CD2-associated protein, Mesenchyme-to-epithelium transition protein with SH3 domains 1, METS 1, Mets1

Immunogen:

Recombinant protein

Isotype:

IgG

Subcellular location:

Cytoplasm,Membrane

Purity:

Affinity purification

Form:

Liquid

Storage Buffer:

PBS with 0.02%sodium azide,100 µg/ml BSA and 50% glycerol.

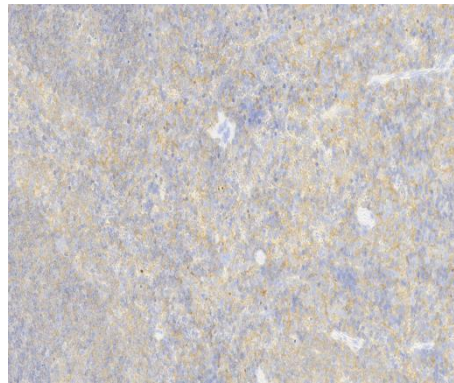
Storage:

Store at -20 °C for one year.

Experimental procedure:

Antigen retrieval: Citrate buffer (pH 9.0) , Medium high heat for 8 minutes, stop for 7 minutes, medium high heat for 8 minutes.Incubate antibody, 4°C overnight.Secondary antibody: Poly-HRP Goat Anti-Rabbit & Mouse Universal Secondary Antibody, RT, 1h.

Images:



Sample: Mouse spleen, 4% PFA 12-24h

Source of Reagents:

发表[中文论文]请标注:CD2AP(B36485S)由杭州浩克生物技术有限公司提供;

发表[英文论文]请标注:CD2AP(B36485S) were kindly provided by Hangzhou Haoke Biotechnology Co., Ltd.